



S. Bi. Automations
Industrial Automation Projects

Industrial Automation Products



Smart Solutions for Modern Industry

SMART STOP



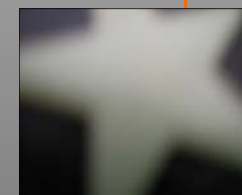
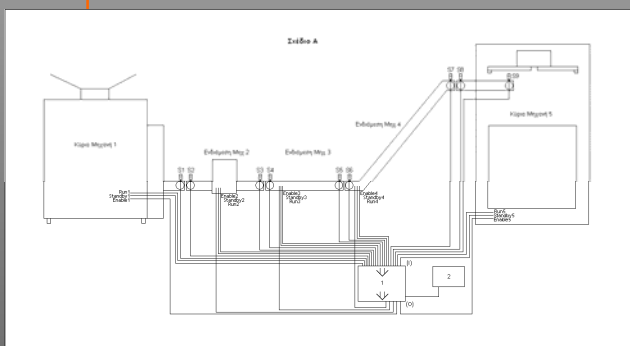
- Production line management
- Start & Pause functions
- Pile-up avoidance
- Easy operation-surveillance
- Saving of energy
- Machine protection
- Production increase
- Loss reduction

INTELLIGENT INDUSTRIAL PROCEDURE MANAGER SMART STOP

The Smart Stop system is a connection and communication mechanism joining together machinery of different types and technologies used in industry and packaging, such as machinery for stuffing, packaging, weighing, movement films etc. It includes machine or apparatus start and pause functions and involves product checking.

It consists of a digital logic controller including with a programming mode and is equipped with a guidance circuit of contacts, photoelectric cells (sensors), as well as control and programming screen.

This system co-ordinates start and pause functions of machines involved into a production line or procedure, enabling us to avoid pile-up, errors, product denaturation, machinery blocking. It also allows multiple users to make use of various functions at the same time, protects the machinery and saves energy and time.



STAMATIOU +30 210 590 1871
Email: info@sbia.gr

FAULT RECOGNITION



FAULT RECOGNITION SYSTEM (INDUSTRIAL ERROR CONTROLLER)

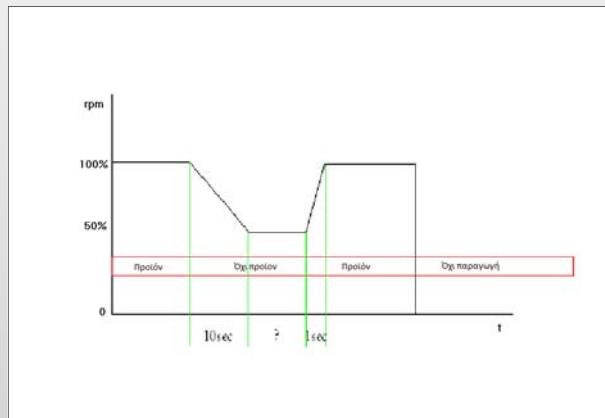
The Fault Recognition System is a useful error detector in production processes. This system detects errors impeding the cycle of the production process being controlled and displays warning messages on a screen.

The error detector operates in two ways: A) with messages which can be inserted in the detector inputs via relevant software; the process is very easy and can be conducted even by the end user; B) with a work cycle training software (Teach In Function). The system consists of the controller and a programming screen.

- Error controlling
- Reduction of repair time
- Adaptability
- Teach In Function
- Easy to Use
- Error Prevention

STAMATIOU +30 210 590 1871
Email: info@sbia.gr

SLEEP FUNCTION



TEMPORARY PAUSE SYSTEM WITH SURVEILLANCE (SLEEP FUNCTION)

The system of temporary pause for industrial machines (Sleep Function) is a circuit for automatic inactivation of machines which are not used during a particular production process. In other words, no product - no cost. It consists of a product detecting sensor and a time delay circuit, providing an electric contact connected to the operation circuit of the machine.

This system aims at saving energy and minimizing damages on the moving parts of a machine.

- Energy Saving
- No Product - No Cost
- Damage minimization of machine parts
- Easy and Economic Replacement
- Small Investment - Great Profit



STAMATIOU +30 210 590 1871
Email: info@sbia.gr

BOOST FUNCTION

FORCE BOOSTING SYSTEM FOR ELECTROMOTORS

The system of force boosting for electromotors - or else overdriving- is a system increasing the speed of electromotors with the use of an inverter without putting the electromotor in danger.

This technique enables faster operation of a machine (e.g. a lift), if this is possible, and deactivation of its motor in order to save energy or minimize damage of the moving parts of the machine.

This system is far more economic than fully replacing the reducer of the electromotor which provides only one stable speed.

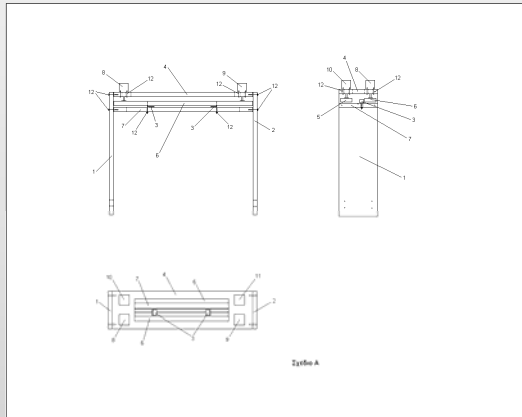
This system can be applied on S or Z lifts, conveyor belts, chain conveyors, machine screws, etc.

- Electromotor force boosting
- Reduction of product transfer time
- Easy and Economic Replacement
- More production in less time



STAMATIOU +30 210 590 1871
Email: info@sbia.gr

SLIDE BARS



INTERLOCK MECHANISM OF FLEXIBLE PACKAGING FILM

The Slide Bars interlock mechanism improves stability of flexible packaging film used by various types of packaging machines, also assisting in interlocking the film, so that it can be easily replaced when it finishes.

This system is made of aluminum and stainless steel and consists of four pneumatic pistons and two manual pneumatic switches.

This mechanism stabilizes packaging film during machine operation, so as to retain uniformity of the packed product. It also interlocks film when it finishes enabling the machine operator to easily replace it.

- Easy replacement of packaging film
- Reduction of “dead” manufacturing time
- Easy to build and adapt
- Raw material saving

PULSE VIBRATOR



- Minimization of weight aberration
- Better quality of product
- Easy and economic installation
- Small Investment – Great Profit

PULSE VIBRATOR FOR VOLUMETRIC FEEDERS

A pulse vibrator assists in the minimization of weight aberration of the packed product in machines using the technology of volumetric feeders.

Vibrations are controlled and dispensed when the feeder is on pause, after dosage procedure.

As a result, vibrations condense the product in the dosage bowl and almost null aberration of the end weight is achieved.

This system is rather useful for packaging machines for products consisting of big grains leaving considerable air gap.

STAMATIOU +30 210 590 1871
Email: info@sbia.gr



S.Bi.A. Stamatiou Industrial Automations

45, Phoinix St.
12 137, Peristeri
Athens, Greece

Tel. +30 210 590 1871
Mob: 69 775 999 25
E-mail: info@sbia.gr
Site: www.sbia.gr